

1 2 3 4 5

Apply

all

Focal Length in 35mm Film 28 mm  
 Scene Capture Type Standard

Contrast  
 Saturation  
 Sharpness

Make Apple  
 Model iPhone X

Camera Owner Name  
 Body Serial Number  
 Lens Specification (4,6,1,8,2,4)  
 Lens Make Apple  
 Lens Model iPhone X back dual camera 4mm f/1.8

Lens Serial Number  
 White Balance Details  
 Flash Bias

Image  
 Software 12.1.4

Date Time 19.02.2019 09:13:04  
 Date/Time Original 19.02.2019 09:13:04  
 Date/Time Digitized 19.02.2019 09:13:04

Orientation Upper Left

Image Description  
 Artist  
 Copyright  
 User Comment  
 File Comment

GPS

Latitude 56.55 11.460000°

Latitude Reference North latitude

Longitude 24.16 17.240000°

Longitude Reference East longitude

Altitude Reference Sea level

Altitude 5.07225 m

GPS Timestamp 7:13: 2

GPS Satellites

GPS Status

GPS Measurement Mode

GPS Degree of Precision

GPS Speed Reference Kilometers per hour

GPS Speed 1.81291

GPS Direction Movement Reference

GPS Direction 30.9363

GPS Image Direction Reference

GPS Image Direction True direction

GPS Image Direction 30.9363

GPS Destination Latitude Reference

GPS Destination Latitude

GPS Destination Longitude Reference

GPS Destination Longitude

GPS Destination Bearing Reference

GPS Destination Bearing True direction

GPS Destination Bearing 30.9363

GPS Destination Distance Reference

GPS Destination Distance

GPS Processing Method

GPS Area Information

GPS Date Stamp 2019.02.19

Metadata Organize File



1 2 3 4 5

Metadata Presets (Ctrl+M)

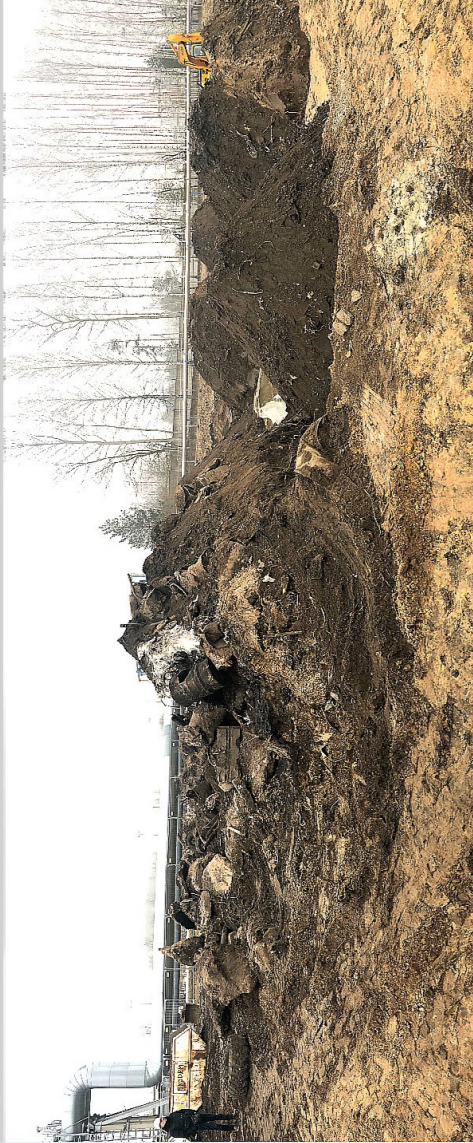
Apply

all

Focal Length in 35mm Film 28 mm  
Scene Capture Type Standard  
Contrast  
Saturation  
Sharpness  
Make **Apple**  
Model **iPhone X**  
Camera Owner Name  
Body Serial Number  
Lens Specification (4,4,1,8,1,8)  
Lens Make **Apple**  
Lens Model **iPhone X back camera 4mm f/1.8**  
Lens Serial Number  
White Balance Details  
Flash Bias

Image  
Software 12.1.4  
Date/Time 19.02.2019 09:21:56  
Date/Time Original 19.02.2019 09:21:56  
Date/Time Digitized 19.02.2019 09:21:56  
Orientation Upper Left  
Image Description  
Artist  
Copyright  
User Comment  
File Comment

GPS  
Latitude 56.55 10.780000°  
Latitude Reference North latitude  
Longitude 24.16 17.190000°  
Longitude Reference East longitude  
Altitude Reference Sea level  
Altitude 7.25919 m  
GPS Timestamp 7.21.55  
GPS Satellites  
GPS Status  
GPS Measurement Mode  
GPS Degree of Precision  
GPS Speed Reference  
Kilometers per hour  
GPS Speed 0.0991568  
GPS Direction Movement Reference  
GPS Image Direction Reference True direction  
GPS Image Direction 94.3969  
GPS Map Datum  
GPS Destination Latitude Reference  
GPS Destination Longitude Reference  
GPS Destination Latitude  
GPS Destination Longitude  
GPS Destination Bearing Reference True direction  
GPS Destination Bearing 94.3969  
GPS Destination Distance Reference  
GPS Destination Distance  
GPS Processing Method  
GPS Area Information  
GPS Date Stamp 2019.02.19



Metadata Organize File

Properties - Metadata

Color calibration and selection tools

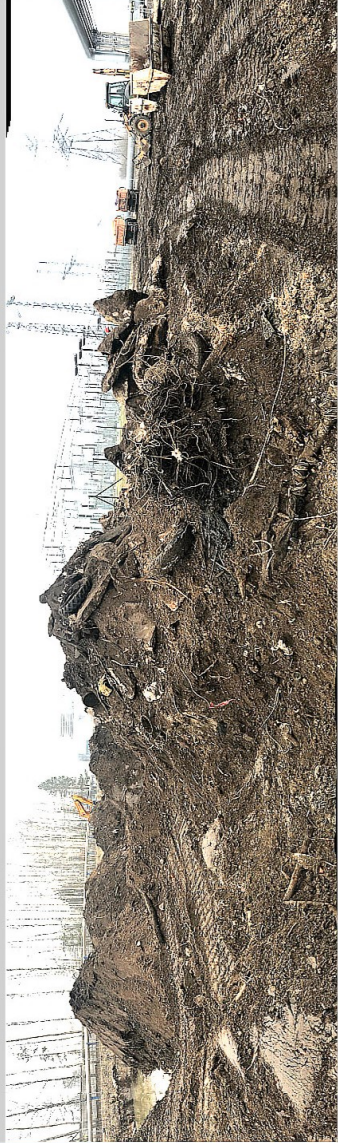
Metadata Presets (Ctrl+M)

all

Focal Length in 35mm Film 28 mm  
 Scene Capture Type Standard  
 Contrast  
 Saturation  
 Sharpness  
 Make **Apple**  
 Model **iPhone X**  
 Camera Owner Name  
 Body Serial Number  
 Lens Specification (4,4,1,8,1,8)  
 Lens Make **Apple**  
 Lens Model **iPhone X back camera 4mm f/1.8**

Lens Serial Number  
 White Balance Details  
 Flash Bias  
 Image  
 Software 12.1.4  
 Date/Time 19.02.2019 09:22:41  
 Date/Time Original 19.02.2019 09:22:41  
 Date/Time Digitized 19.02.2019 09:22:41  
 Orientation Upper Left  
 Image Description  
 Artist  
 Copyright  
 User Comment  
 File Comment

GPS  
 Latitude 56.55 11.840000"  
 Latitude Reference North latitude  
 Longitude 24.16 17.830000"  
 Longitude Reference East longitude  
 Altitude Reference Sea level  
 Altitude 7.57789 m  
 GPS Timestamp 7:22:40  
 GPS Satellites  
 GPS Status  
 GPS Measurement Mode  
 GPS Degree of Precision  
 GPS Speed Reference  
 GPS Speed 0.156575  
 GPS Direction Movement Reference  
 GPS Direction 196.694  
 GPS Image Direction Reference  
 GPS Image Direction 196.694  
 GPS Map Datum  
 GPS Destination Latitude Reference  
 GPS Destination Longitude Reference  
 GPS Destination Latitude  
 GPS Destination Longitude  
 GPS Destination Bearing Reference  
 GPS Destination Bearing 196.694  
 GPS Destination Distance Reference  
 GPS Destination Distance  
 GPS Processing Method  
 GPS Area Information  
 GPS Date Stamp 2019.02.19



Metadata Organize File